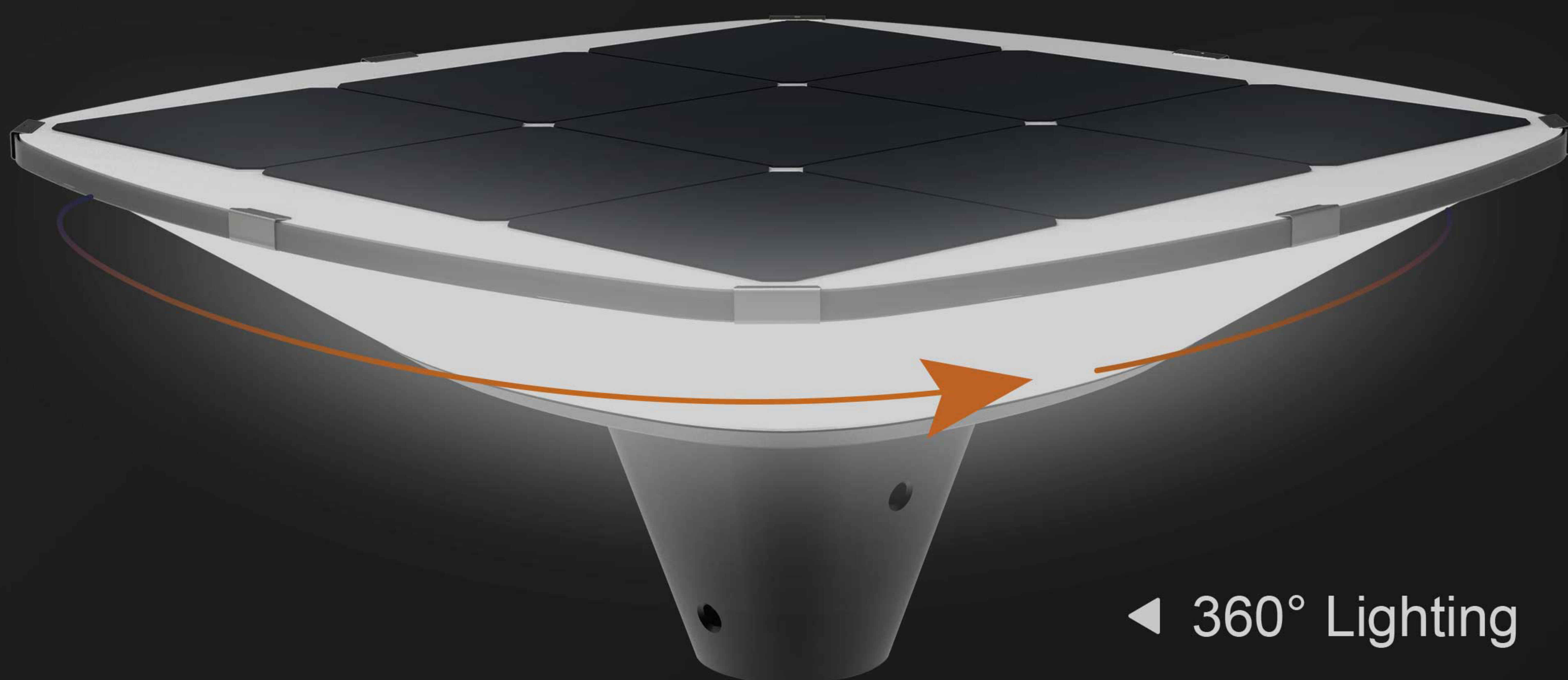




# WSLI ZEUS SOLAR SERIES

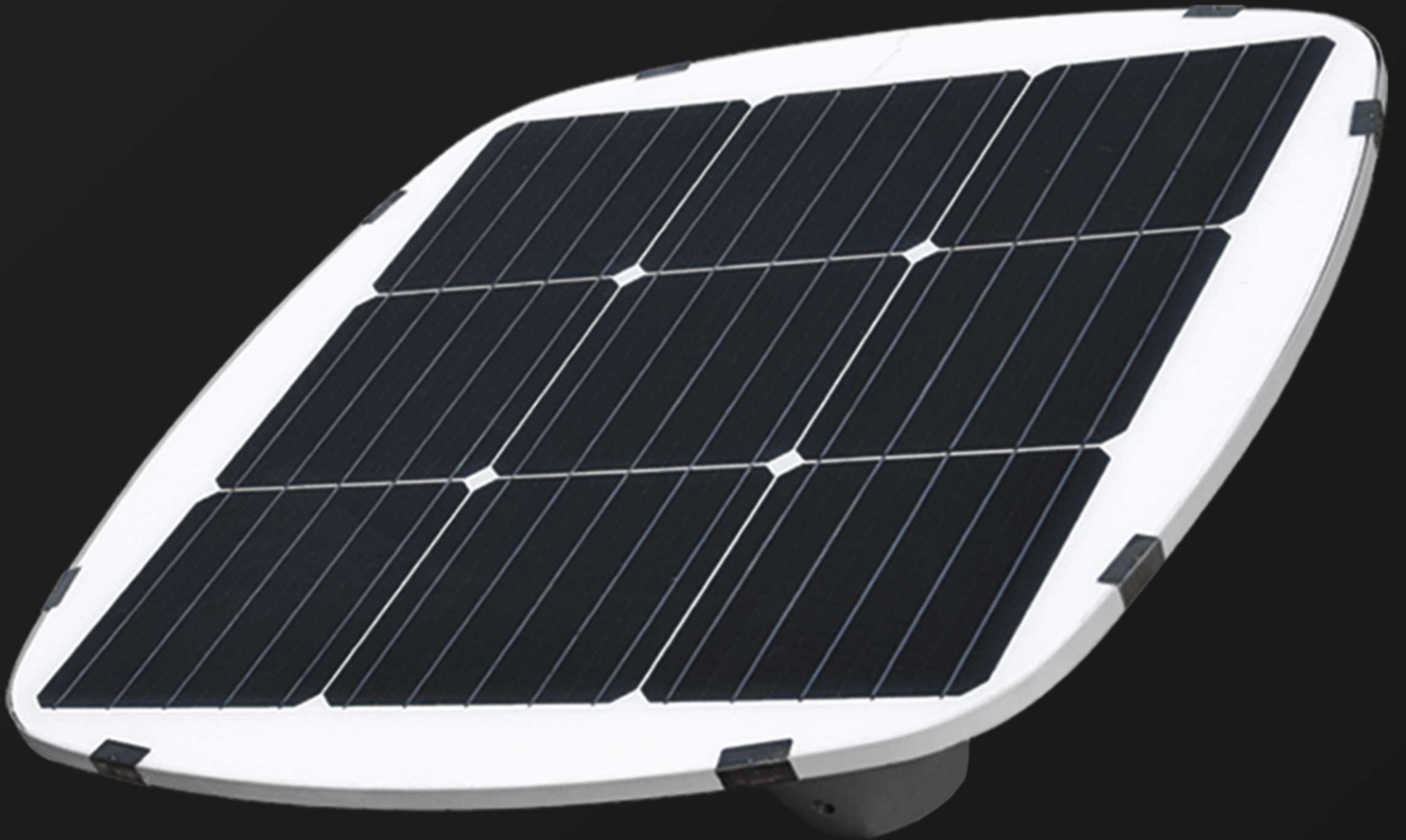






◀ 360° Lighting





- ◀ *Mono crystalline silicon solar panel*
- ◀ *5-10° Downward Slope*



▼ 360° surround lighting





*Monocrystalline Solar Panel  
Efficiency Up to 24%*



*Philips 3030 LED Chip  
LED Lifespan > 100000Hrs*



*LiFePo4  
Lifespan > 4000 Cycles*



*Remote Control*



*360° Lighting Angle*





# ALSO WE HAVE WHAT OTHERS DON'T



360° Lighting



Color of LEDs  
can be customized



High efficiency solar panel  
(24% efficiency)



No Wiring  
Zero electricity bills



Die-cast aluminium base



Glare-free lampshade



Mode NO.

WSLI ZEUS SOLAR SERIES

Lighting

Light Output	3000 - 4200LM
LED Chip	High bright 3030
CCT	2700-6000K (can be customized)
Life Span	100,000 hours to LM80 specifications
Working Way	Motion Sensor / Time Schedule

Solar Panel

Power of PV module	45W
Life Span	80% power after 25 years

Storage

Battery Capacity	275WH
Lighting time in rainy day	>10 days
Life Span	4000 Cycles (>10 years)

Charging Controller

Life Span	>12 years
Working Mode	MPPT
Control Mode	Intelligent, activated by sunlight

Environment

Working Temperature	-15°C to +70°C
Water Resistance	IP65

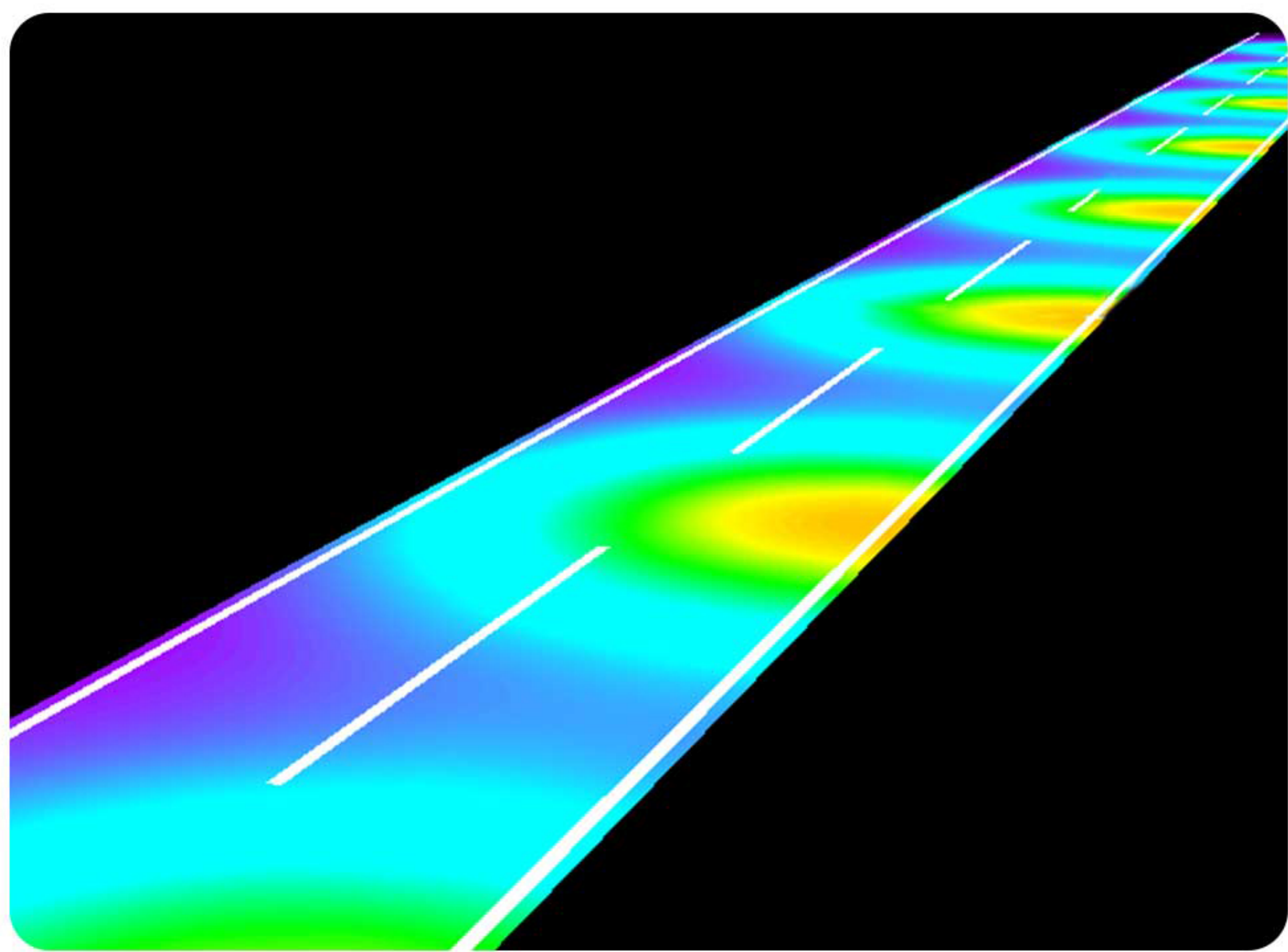
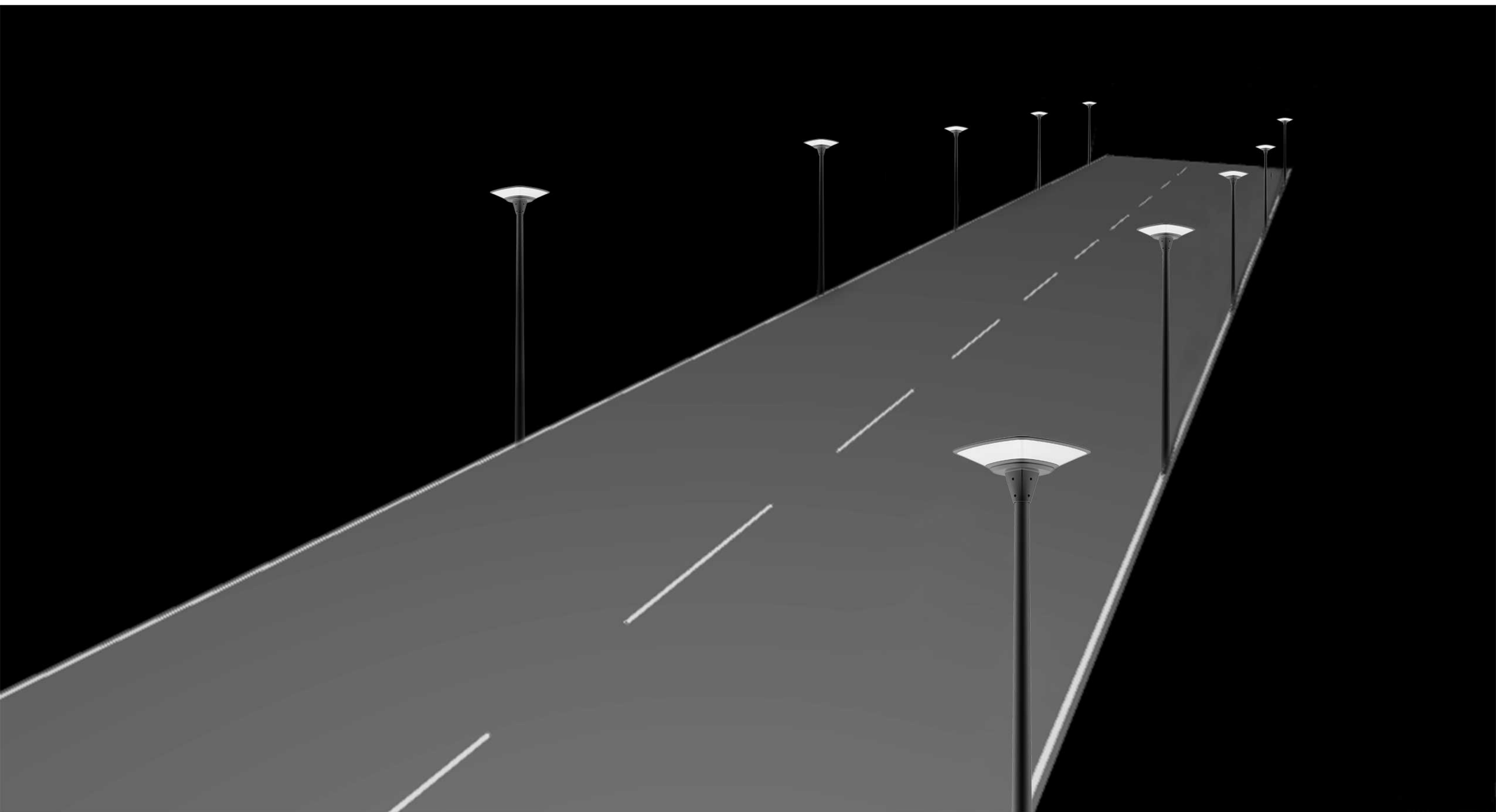
Solar Panel Autoclean

—

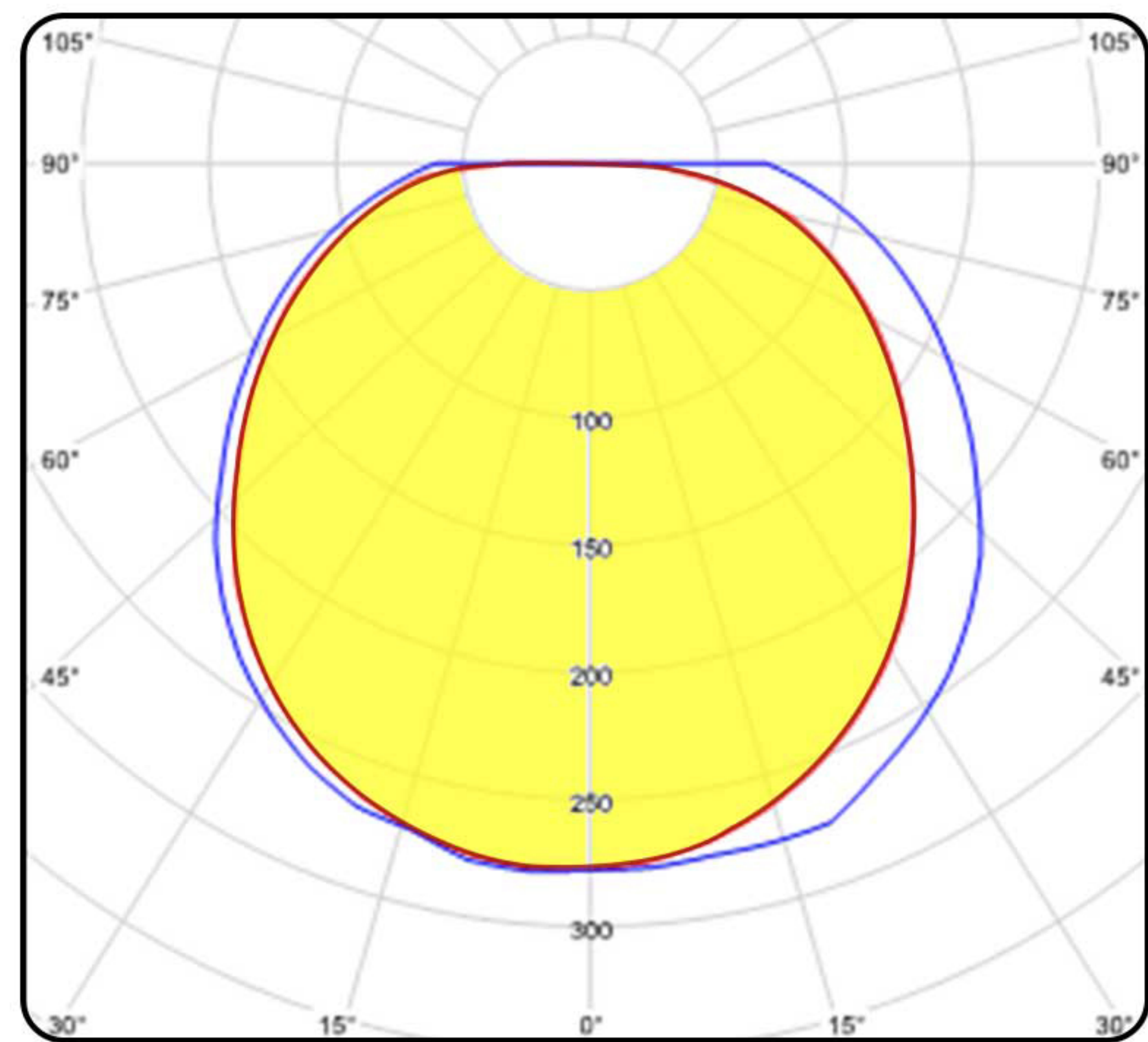
Mechanical Specifications

Recommended Top diameter of the Pole	60mm
Recommended Pole Height	<6m
Net Weight (Kg)	12.5
Package Dimension (mm)	660*660*300



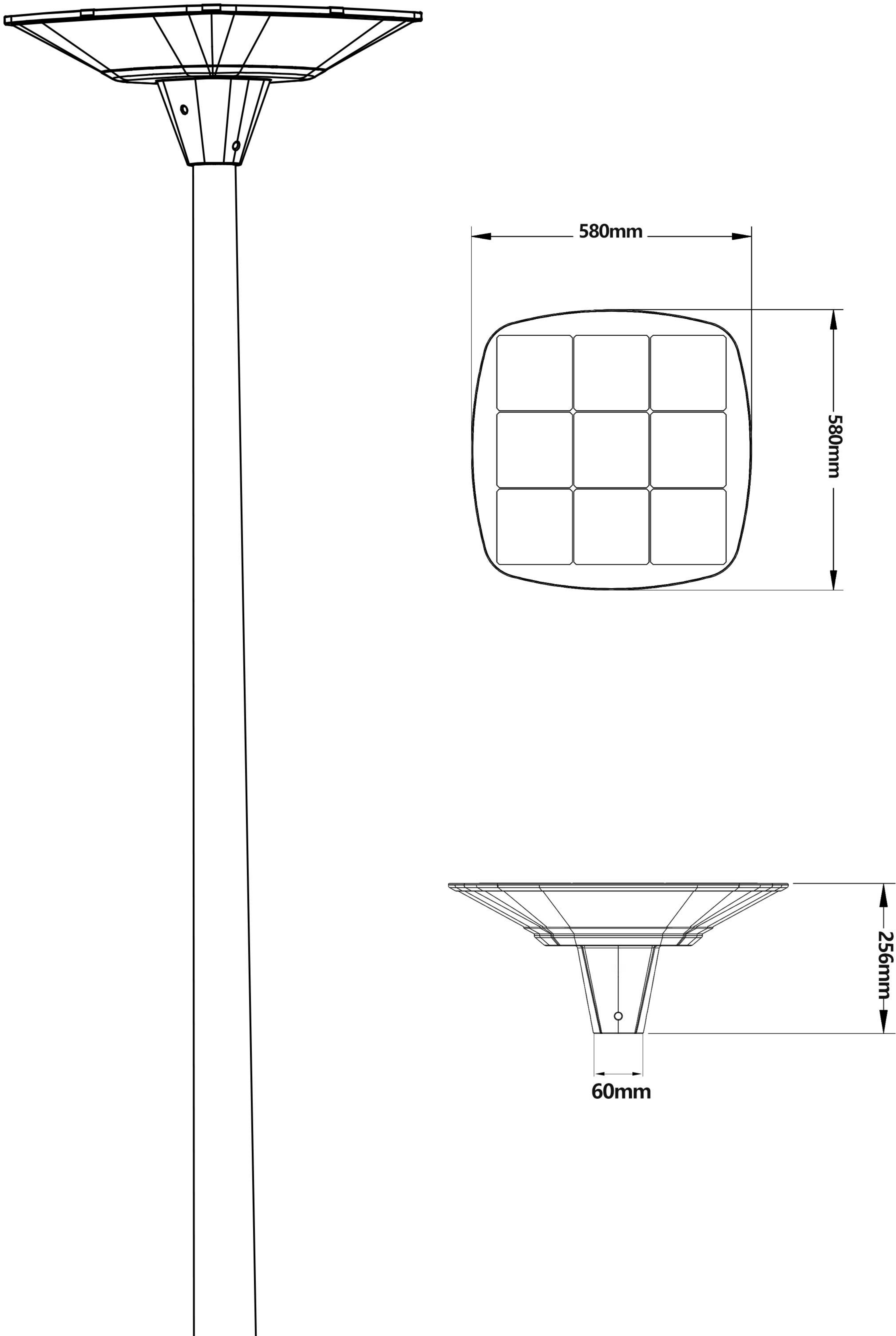


Road Simulated Diagram



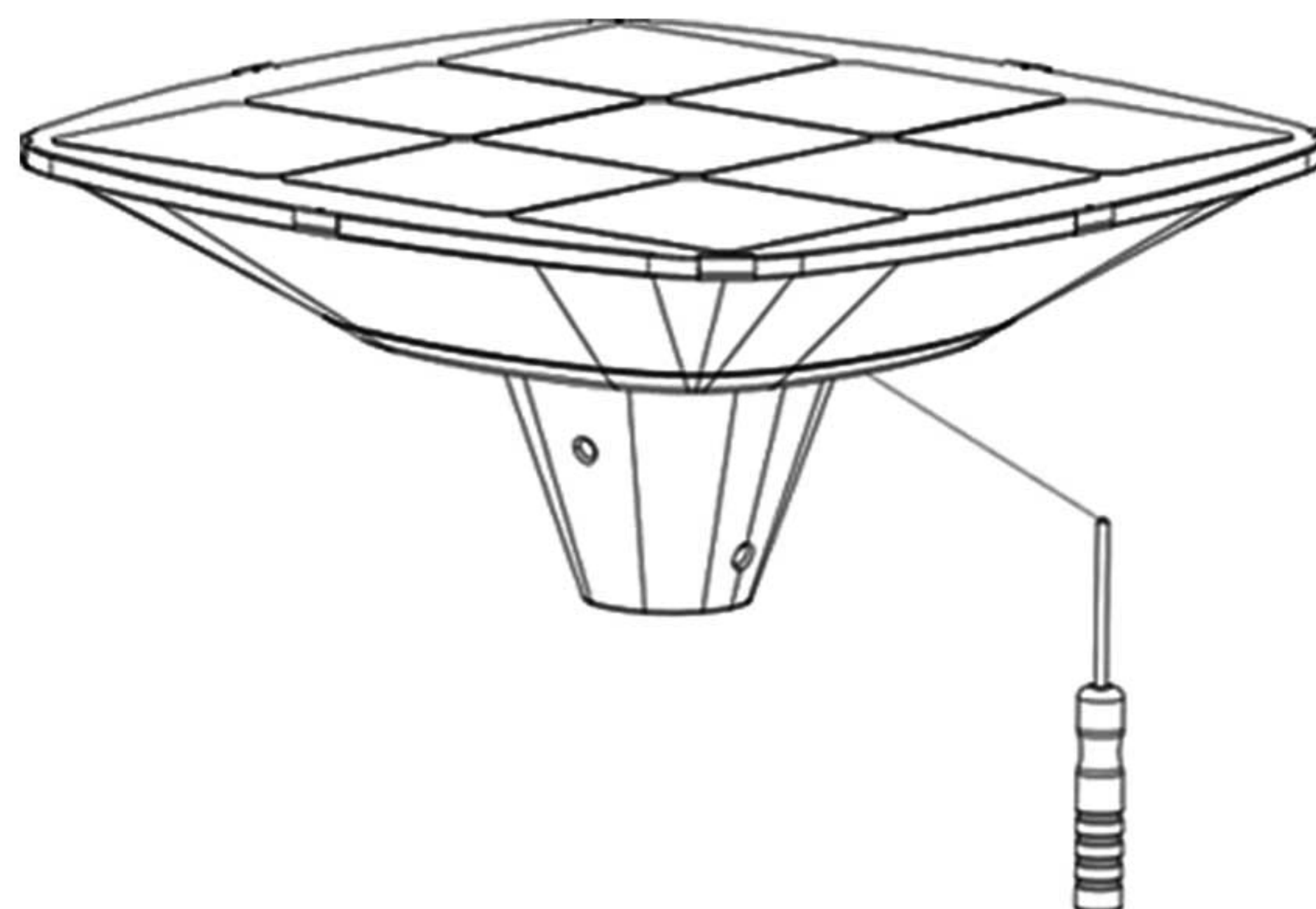
Light Distribution Curve



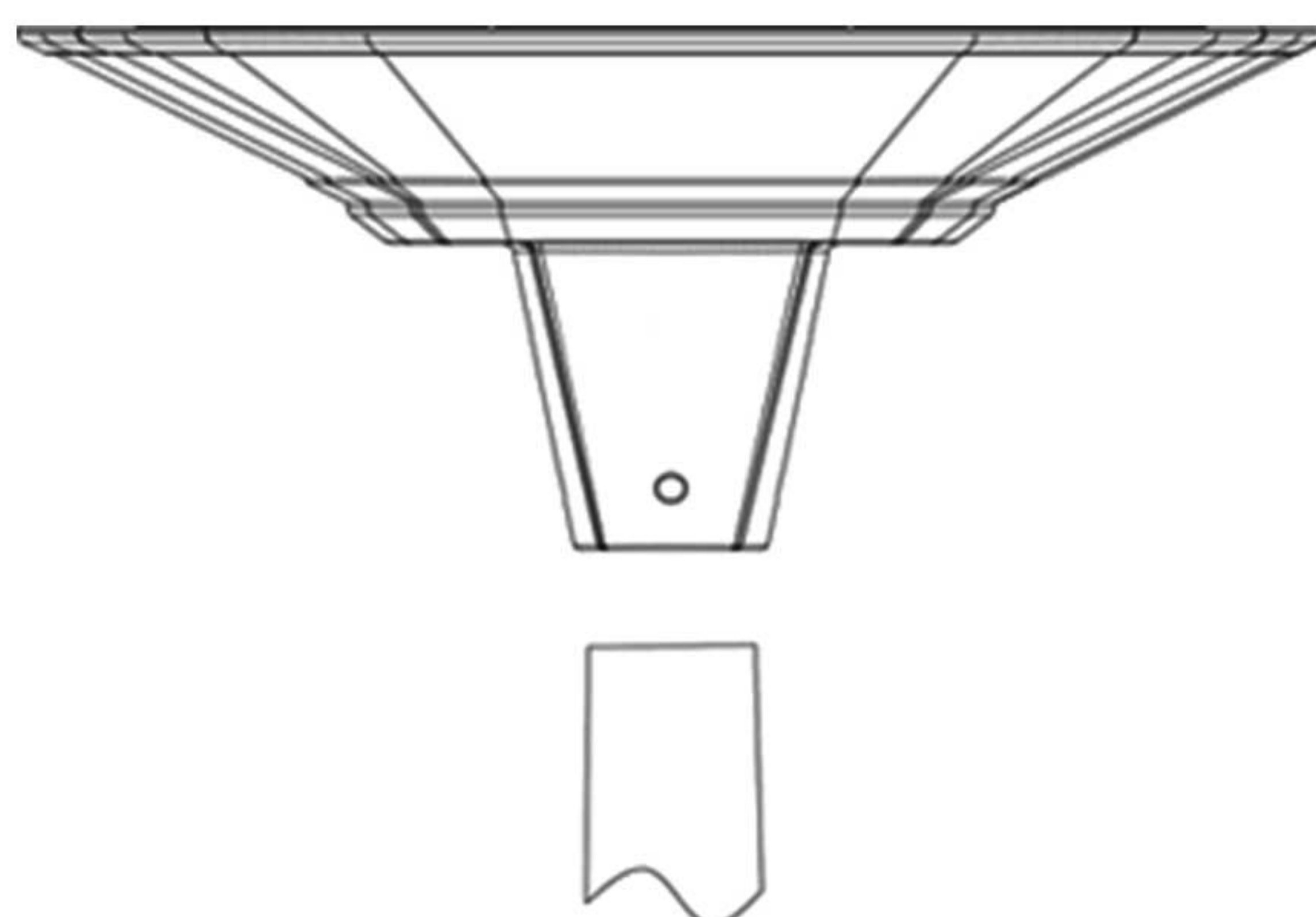




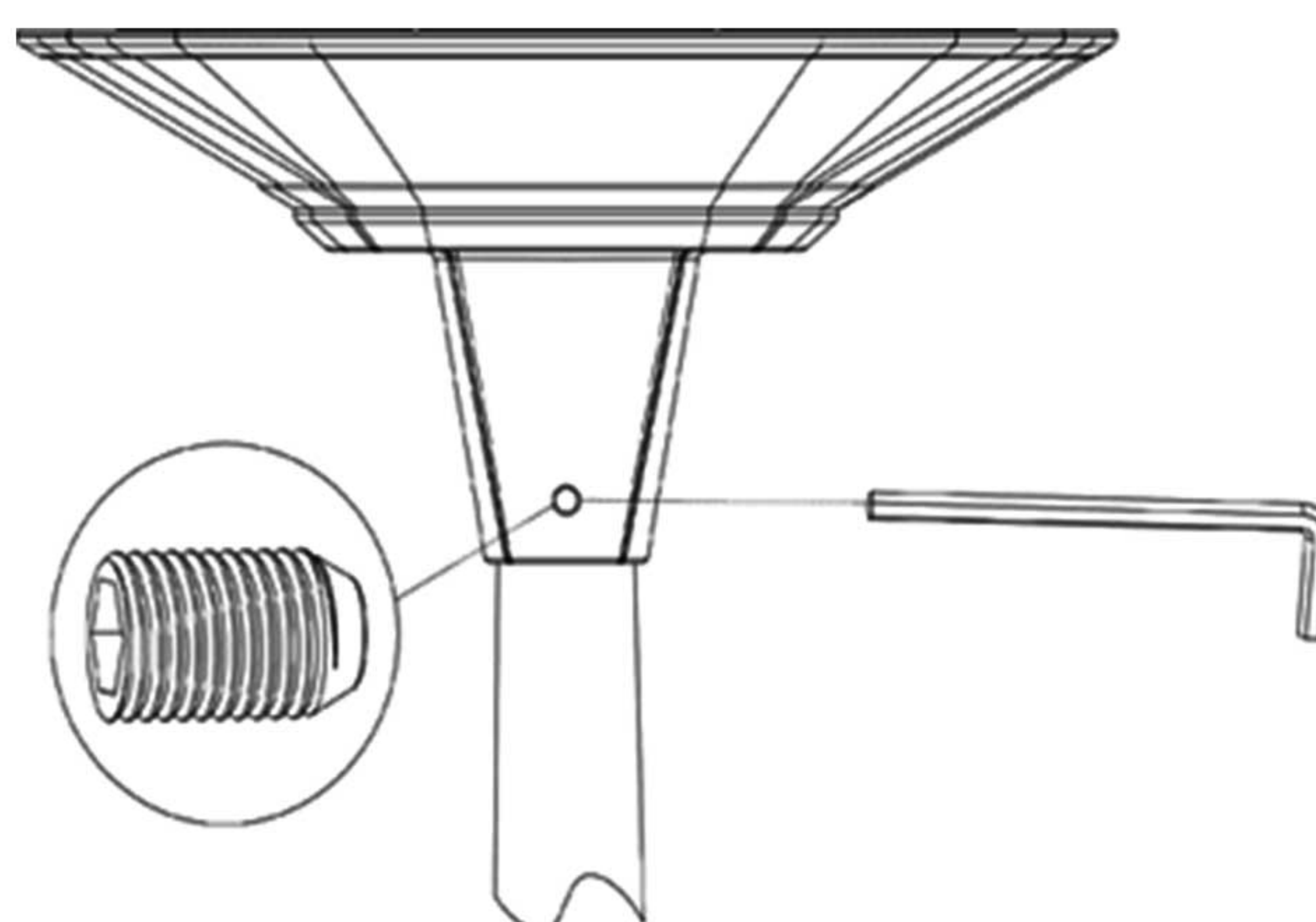
1. Turn on the switch, cover the solar panel with non-transparent materials and wait 15 seconds to see if the light is on. Make the solar panel face the sun, and wait 30 seconds to check if the light is off, finish the installation after testing ok.



2. Mount the light on the light pole and tighten the screws.



3. Unlock the buckle, place solar panel as per below drawing, buckle up.





Step 1



Step 2



Step 3



Step 4



Model NO.	QTY(PCS)	Carton Size(mm)	Net Weight
WSLI ZEUS SOLAR SERIES	1	660*660*300	12.7kg



# *WSLI ZEUS SOLAR SERIES*

*LED SOLAR STREET LIGHT*



White Star Lightings

Tel: +264 61 303 320 / +264 81 325 5882

E-mail: [paul@wstar3.com](mailto:paul@wstar3.com)

[WWW.Whitestarlights.com](http://WWW.Whitestarlights.com)